

548 W. 28th Street
Suite 333
New York, NY 10001
(212) 367-8994
(212) 367-8984 fax
Tues. – Sat. 12 – 6PM
info@soho20gallery.com
www.soho20gallery.com

For Immediate Release:

Kelly Savage

Pestering

March 31 – April 25, 2015

Opening Reception:

Thursday April 2, 6 -8pm

Panel Discussion: Artist as Ally

Saturday April 25, 5pm

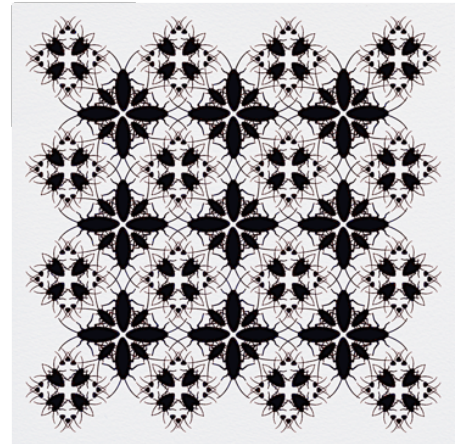
Clarity Haynes, *Painter*

Vikki Law, *Writer, Activist*

Jason Lujan, *co-chair, ABC No Rio Board of Directors*

Debbie Rasiel, *Photographer*

SOHO20
C H E L S E A



Moving Wallpaper (detail), Collage on on board, 18 x 18"

BOARD OF DIRECTORS

Nancy Azara
Monica Bock
Darla Bjork
Anne Elliott
Lucy Hodgson
Andrew Hottle
Eve Ingalls
Francine LeClerc
Cynthia Mailman
Linda Pagan
Debbie Rasiel
David Rasiel
Kathy Stark

BOARD OF ADVISORS

Linda Cunningham
Ann Sutherland Harris
Cynthia Navaretta
Vernita Nemec
Faith Ringgold
Miriam Schapiro

GALLERY STAFF

Dana Harrison

Pestering, on view at SOHO20 Chelsea Gallery through April 25, is an airing of grievances about airing grievances. Kelly Savage's exhibition relays a narrative about how assertive women with agency are often regarded with alarming frequency as aggressive, a nuisance or a nag. Working with wallpaper and carefully hand cut paper as her medium, Savage seeks to capture that moment when a woman takes action and transforms, in the eyes of the other, from non-threatening entity to annoying pest.

Savage deliberately chose the medium of paper for its association with the decorative arts, and by extension, women. Reinforcing a gendered vision of artistic creation, Savage manually cuts paper with precision and diligence, evoking the toiling, daintiness of "women's work." She produces beautifully crafted goods with a seemingly homemade flare—consumed with aesthetics, and arranged tastefully in the space. At a distance, *Pestering* offers the viewer decorative, unassuming décor.

However, what at first glance appears to be ornamental background soon comes into focus as a field of infestation. Upon closer observation, it is revealed that the main components of the patterning are images of vermin, roaches and rats. In comparing women to invasive pests, Savage cultivates an atmosphere of uneasy tension, and illuminates a contradictory situation that often seems to face women: You're damned if you do, and you're damned if you don't.

On April 25th, Savage will moderate a discussion with four panelists as they consider how artists can serve as advocates for and within various marginalized communities.

Kelly Savage is an artist based in Brooklyn, New York. She received her BFA summa cum laude from Brooklyn College. She is the founder of the artist collective Subject to Change and a member of the Visual Arts Committee at ABC No Rio. Savage's art has been in numerous group exhibitions in NYC spaces including: ABC No Rio, Bullet Space, Not an Alternative/Change You Want to See, Petri Space, St. Mark's Church and Soho20 Chelsea. In 2010, Savage installed a mural for 4th Arts Block titled *Are We There Yet* and in 2013 she had a solo exhibition at Brooklyn College, an all-paper installation titled *Stuffing*. She is the recipient of the Charles G. Shaw Brooklyn College Art Department Scholarship and the Sarah Koltun Scholarship. Savage is the recent recipient of the Soho20 Chelsea Fellowship award.

For more information, please contact the gallery at 212-367-8994 or info@soho20gallery.com